

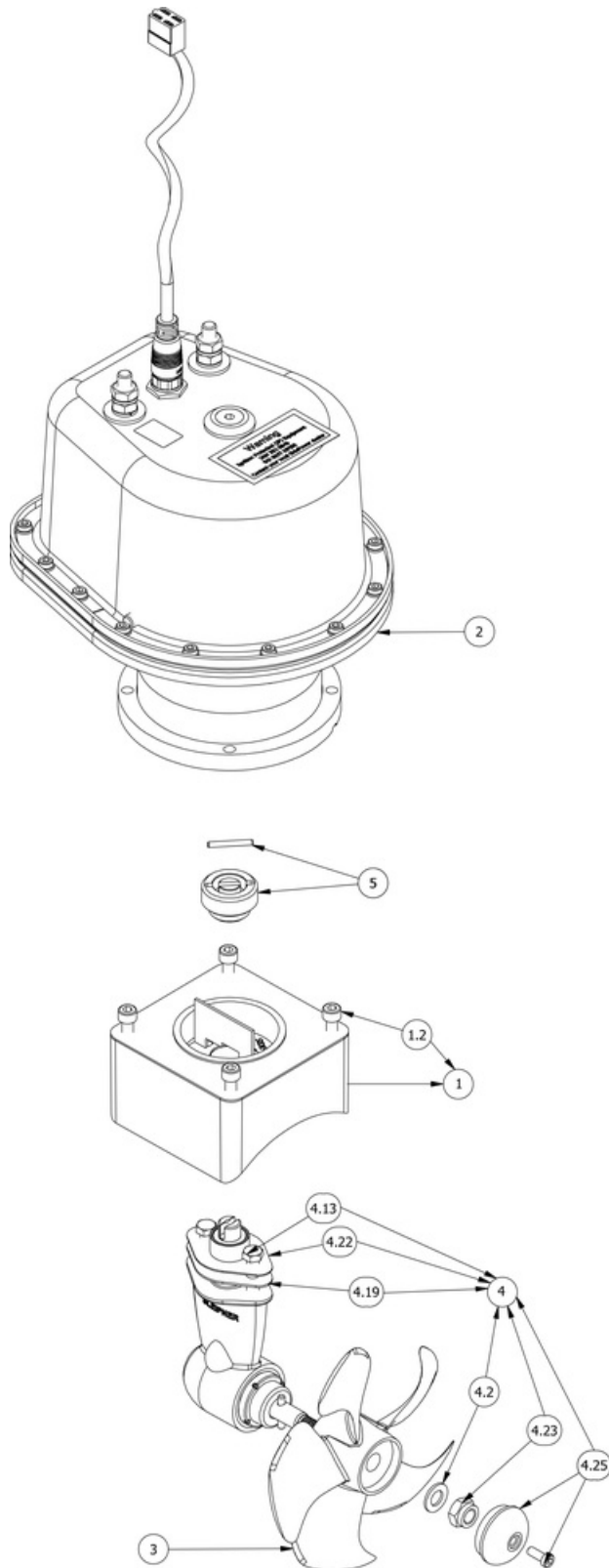
SE60/185S2-24IP

SE60 IP tunnel bow/stern thruster 24V

Spare parts (valid from 2020-11-02)



SLEIPNER



#	Name	Item Code	Description
1	Engine bracket	4 0502	Motor bracket SE60
1.2	DIN 912 - M8 x 22	110028	Bolt M8 x 22 Ubcraco
2	Complete motor SE60-24IP	4 0104 24	Electric motor SE60 24V IP
3	5bl skew propeller SE60	4 1261	Propeller Ø185/5bl Q-Prop™
4	Gearleg mount.w / out propeller	4 0602-U	Gearleg SE60
4.13	DIN 609 - M8 x 55 - 13	6 1080	Bolt M8 x 55
4.19	Gasket 1.5mm gearbox	6 1311 15	Gasket for gearleg/tunnel SE60 1,5mm
4.2	Washer propeller SS2324	7 1181	Washer
4.22	Gasket 1mm gear housing	6 1311 10	Gasket for gearleg/tunnel SE60 1mm
4.23	DIN 985 - M12x1.75	4 1260	Lock nut M12
4.25	Alu anode SE60 / 80/100	7 1190 A	Anode, aluminium SE60/80/100
5	Coupling assembly	SM-137073	Flexible coupling SE50/60

(1.2) Not available as a spare part from Sleipner AS - *It is a common industry standard part available at your nearest store.

(4.13) Not available as a spare part from Sleipner AS - *It is a common industry standard part available at your nearest store.

The installer alone has responsibility for the installation of the spare parts. Side-Power only warranty the spare parts supplied only.

The information given in the document was correct at the time it was published. However, Sleipner Motor AS can not accept liability for any inaccuracies or omissions it may contain. Continuous product improvement may change the product specifications without notice. Therefore, Sleipner Motor AS can not accept liability for any possible differences between product and document.