

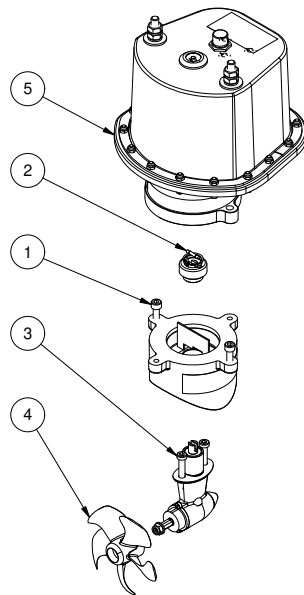
SE40/125S2-12IP

SE40 IP tunnel bow/stern thruster 12V

Spare parts (valid from 2022-04-26)



SLEIPNER



| # | Quantity | Name | Item Code | Description |
|-----|----------|-------------------|-----------|---|
| 1 | 1.00 | Bracket | SM-126592 | Motor bracket SE30/40S2, galvanic isolation |
| 2 | 1.00 | Flexible coupling | SM175029 | Flexible coupling SE20,25,30 & 40 |
| 3/4 | 1.00 | Gearleg | 3 0601 | Gearleg SE30/40 |
| 5 | 1.00 | Electric motor | 3 0104 12 | Electric motor SE40 12V IP |

The installer alone has responsibility for the installation of the spare parts. Side-Power only warranty the spare parts supplied only.

The information given in the document was correct at the time it was published. However, Sleipner Motor AS can not accept liability for any inaccuracies or omissions it may contain. Continuous product improvement may change the product specifications without notice. Therefore, Sleipner Motor AS can not accept liability for any possible differences between product and document.