

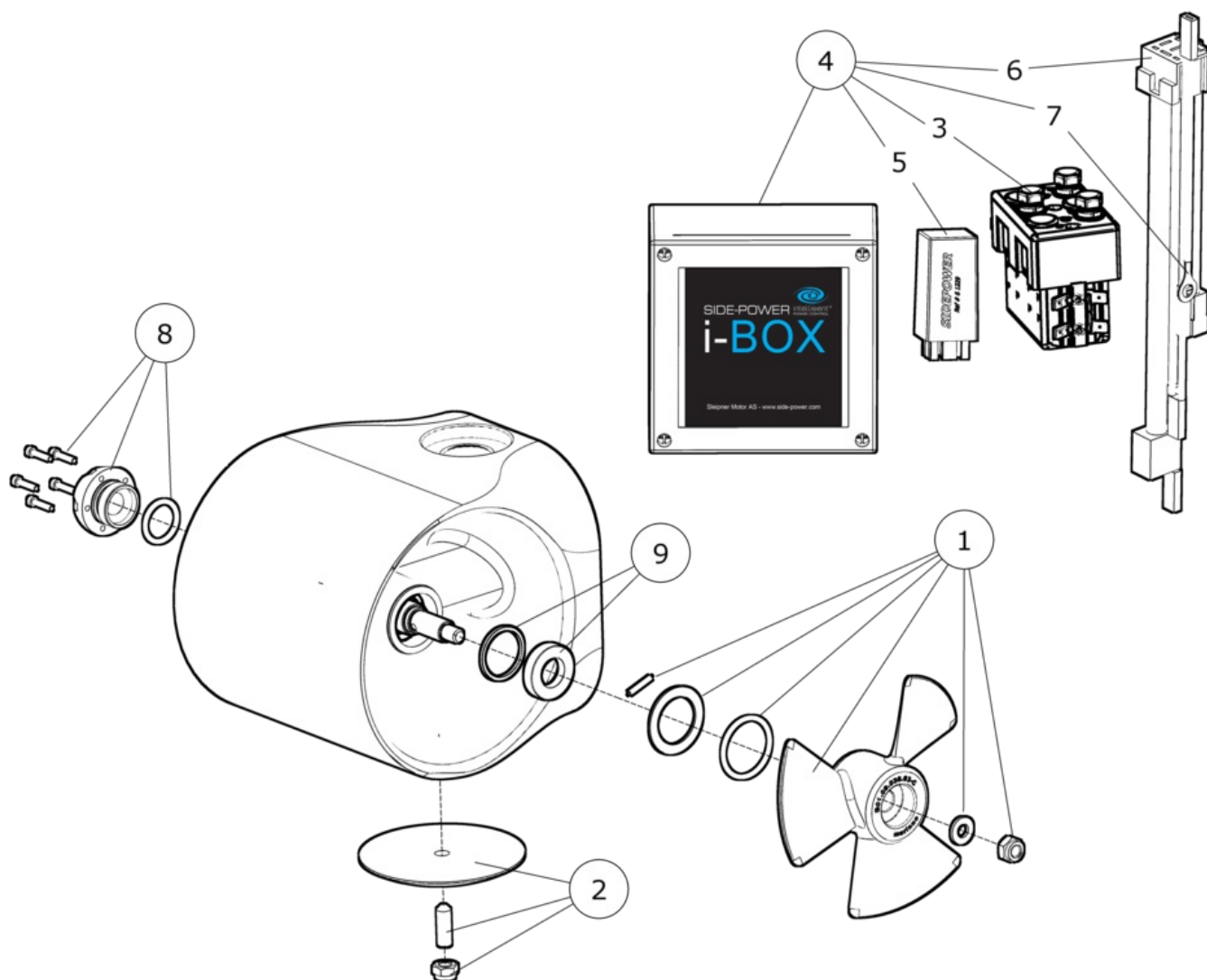
**EX75S**

**UTGÅTT - EX75 Single 24V thruster**

**Spare parts (valid from 2017-11-27)**



**SLEIPNER**



#	Name	Item Code	Description
1	Propeller kit	50321	Propeller kit EX55C/70C/75S/95S
2	Anode kit	4 1190	Anode for Exturn
3	Solenoid kit	41571125	Solenoid for i-box
4	iBox	102250-24V	Solenoid / I-box 24V
5	Electronic Control box	6 1232 I	Electronic Interface for thruster motor control
6	EX cable	6 1850	Cable Exturn
7	IPC interface cable	102252	IPC interface Exturn
8	End cap kit	137309	End cap kit Exturn
9	Seal kit EX	137318	Seal kit EX series

The installer alone has responsibility for the installation of the spare parts. Side-Power only warranty the spare parts supplied only.

The information given in the document was correct at the time it was published. However, Sleipner Motor AS can not accept liability for any inaccuracies or omissions it may contain. Continuous product improvement may change the product specifications without notice. Therefore, Sleipner Motor AS can not accept liability for any possible differences between product and document.