

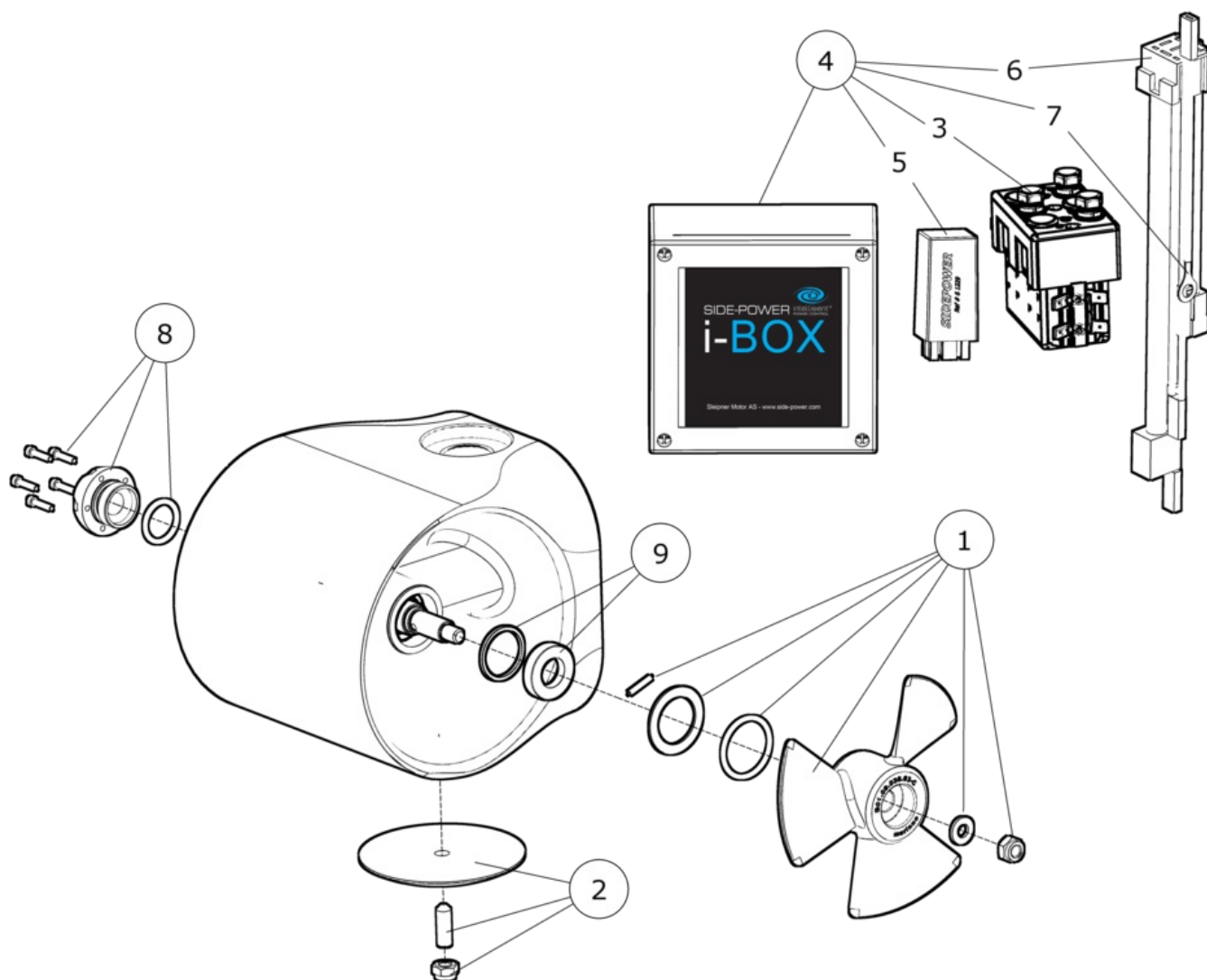
**EX55S**

**UTGÅTT - EX55 Single 12V thruster**

**Spare parts (valid from 2017-11-27)**



**SLEIPNER**



#	Name	Item Code	Description
1	Propeller kit	50320	Propeller kit EX25C/35S/40C/55S
2	Anode kit	4 1190	Anode for Exturn
3	Solenoid kit	41571124	Solenoid kit for EX 12v
4	iBox	102250-12V	Solenoid i-box 12v
5	Electronic Control box	6 1232 I	Electronic Interface for thruster motor control
6	EX cable	6 1850	Cable Exturn
7	IPC interface cable	102252	IPC interface Exturn
8	End cap kit	137309	End cap kit Exturn
9	Seal kit EX	137318	Seal kit EX series

The installer alone has responsibility for the installation of the spare parts. Side-Power only warranty the spare parts supplied only.

The information given in the document was correct at the time it was published. However, Sleipner Motor AS can not accept liability for any inaccuracies or omissions it may contain. Continuous product improvement may change the product specifications without notice. Therefore, Sleipner Motor AS can not accept liability for any possible differences between product and document.