

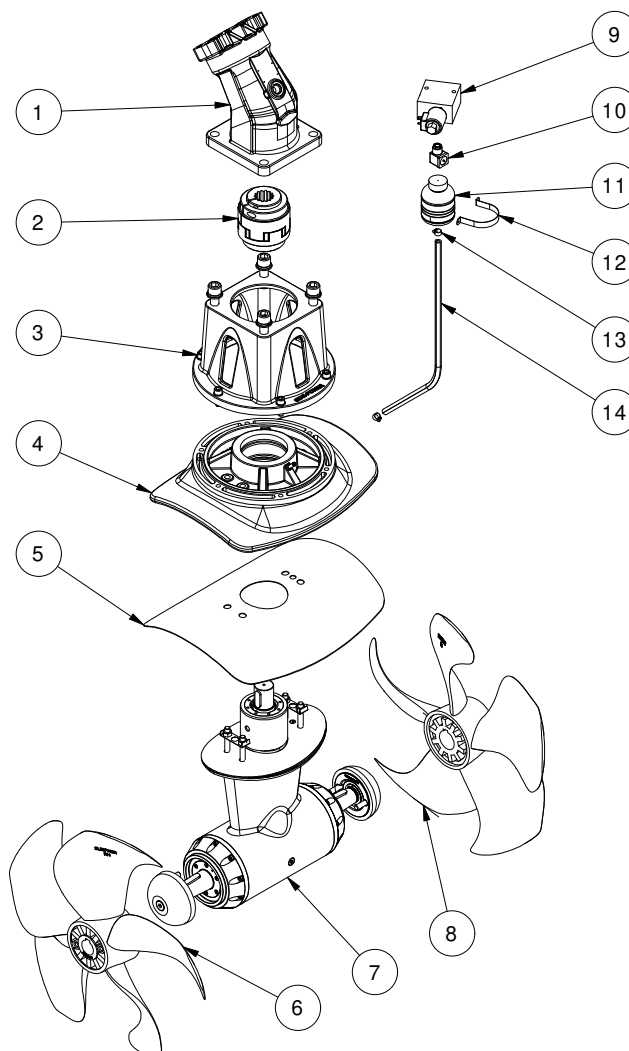
**SH1400/610-BA125**

**SH1400 tunnel thruster hydraulic Ø610  
BA125**

**Spare parts (valid from 2023-08-18)**



**SLEIPNER**



#	Quantity	Name	Item Code	Description
1	1.00	Hydraulic motor	72100/AA2FM-125-D13	Hydraulic motor 125cm³ Bent Axis
2	1.00	Flexible coupling	100 1465	Flexible coupling Rotex 55 Ø45/13T
3	1.00	Bracket upper	100 0503	Motor bracket SH1400/SH1000 SAE-D, upper part
4	1.00	Bracket lower	100 0502	Motor bracket SH1400, lower part
5	1.00	Gasket for flange	70 1313	Gasket for bracket/tunnel SH1000-1400
6	1.00	Propeller RH	100 1270 RH	Thruster propeller 5bl Q-Prop™ for SH1400 RH
7	1.00	Gearleg, complete	100 0600	Gearleg SH1400 w/out propellers
8	1.00	Propeller LH	100 1270 LH	Thruster propeller 5bl Q-Prop™ for SH1400 LH
9	1.00	2-port shutoff valve	HF-NO-003-ST	2-port shut off valve NO 1"
10	1.00	Hirschmann plug with LED	74390	Hirschmann plug with LED
11	1.00	Oil container	6 1030	Oil container
12	1.00	Bracket for oil container		--
13	2.00	Hose clamp		--
14	1.00	Oil hose		--

The installer alone has responsibility for the installation of the spare parts. Side-Power only warranty the spare parts supplied only.

The information given in the document was correct at the time it was published. However, Sleipner Motor AS can not accept liability for any inaccuracies or omissions it may contain. Continuous product improvement may change the product specifications without notice. Therefore, Sleipner Motor AS can not accept liability for any possible differences between product and document.