

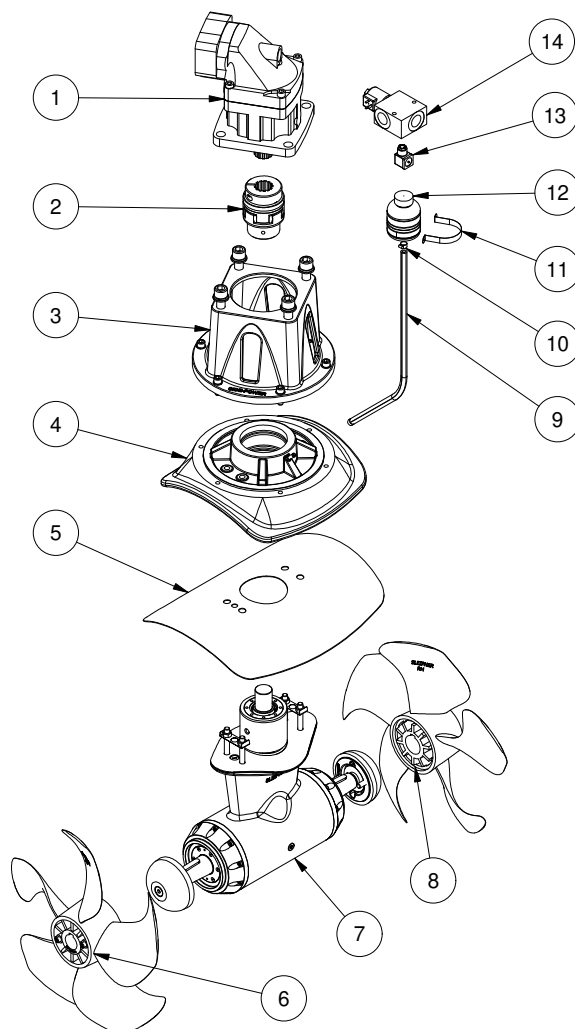
SH1000/513-BA110D13

**SH1000 tunnel thruster hydraulic Ø513
BA110**

Spare parts (valid from 2023-08-28)



SLEIPNER



#	Quantity	Name	Item Code	Description
1	1.00	Hydraulic motor	72100/F12-110-D4D13	Hydraulic motor 110cm ³ Bent Axis
2	1.00	Flexible coupling	70 1464	Flexible coupling Rotex 42 Ø40/13T
3	1.00	Bracket upper	100 0503	Motor bracket SH1400/SH1000 SAE-D, upper part
4	1.00	Bracket lower	70 0502	Motor bracket SH1000, lower part
5	1.00	Gasket for flange	70 1313	Gasket for bracket/tunnel SH1000-1400
6	1.00	Propeller kit for SH1000	70 1270 LH	Thruster propeller 5bl Q-Prop™ for SH1000 LH
7	1.00	Gearleg SH1000 w/out propeller	70 0600	Gearleg SH1000 w/out propeller
8	1.00	Propeller kit for SH1000	70 1270 RH	Thruster propeller 5bl Q-Prop™ for SH1000 RH
9	1.00	Oil hose		--
10	2.00	Hose clamp		--
11	1.00	Bracket for oil container		--
12	1.00	Oil container	6 1030	Oil container
13	1.00	Hirschmann plug with LED	74390	Hirschmann plug with LED
14	1.00	2-port shutoff valve	HF-NO-003-ST	2-port shut off valve NO 1"

The installer alone has responsibility for the installation of the spare parts. Side-Power only warranty the spare parts supplied only.

The information given in the document was correct at the time it was published. However, Sleipner Motor AS can not accept liability for any inaccuracies or omissions it may contain. Continuous product improvement may change the product specifications without notice. Therefore, Sleipner Motor AS can not accept liability for any possible differences between product and document.