

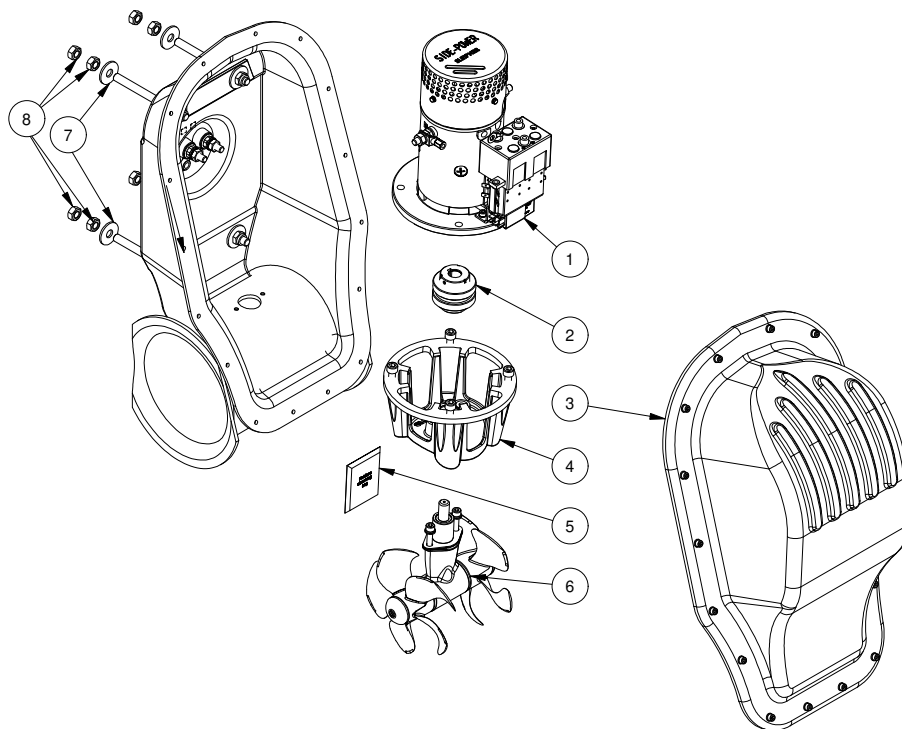
SX80/185T-12V

SX80 external stern thruster 12V

Spare parts (valid from 2023-06-14)



SLEIPNER



#	Quantity	Name	Item Code	Description
1	1.00	Electric motor ONLY- complete	6 0103 12	Electric motor ONLY - SX80/12V
2	1.00	Flexible coupling kit Ø20.3xØ16.3 L=61	7 1462	Flexible coupling SE80/100
3	1.00	Cover chassis upper part kit SX80/100	SM168434	Cover chassis, upper part kit SX80/100
4	1.00	Bracket for motor	8 0501	Motor bracket SE80/100
5	1.00	Moisture absorbing pack	74298	Moisture absorbing pack
6	1.00	Gearleg complete	8 0601	Gearleg SE80/100
7	8.00	Washer		DIN 9021 - 13
8	8.00	Nut		DIN 934 - M12

The installer alone has responsibility for the installation of the spare parts. Side-Power only warranty the spare parts supplied only.

The information given in the document was correct at the time it was published. However, Sleipner Motor AS can not accept liability for any inaccuracies or omissions it may contain. Continuous product improvement may change the product specifications without notice. Therefore, Sleipner Motor AS can not accept liability for any possible differences between product and document.