

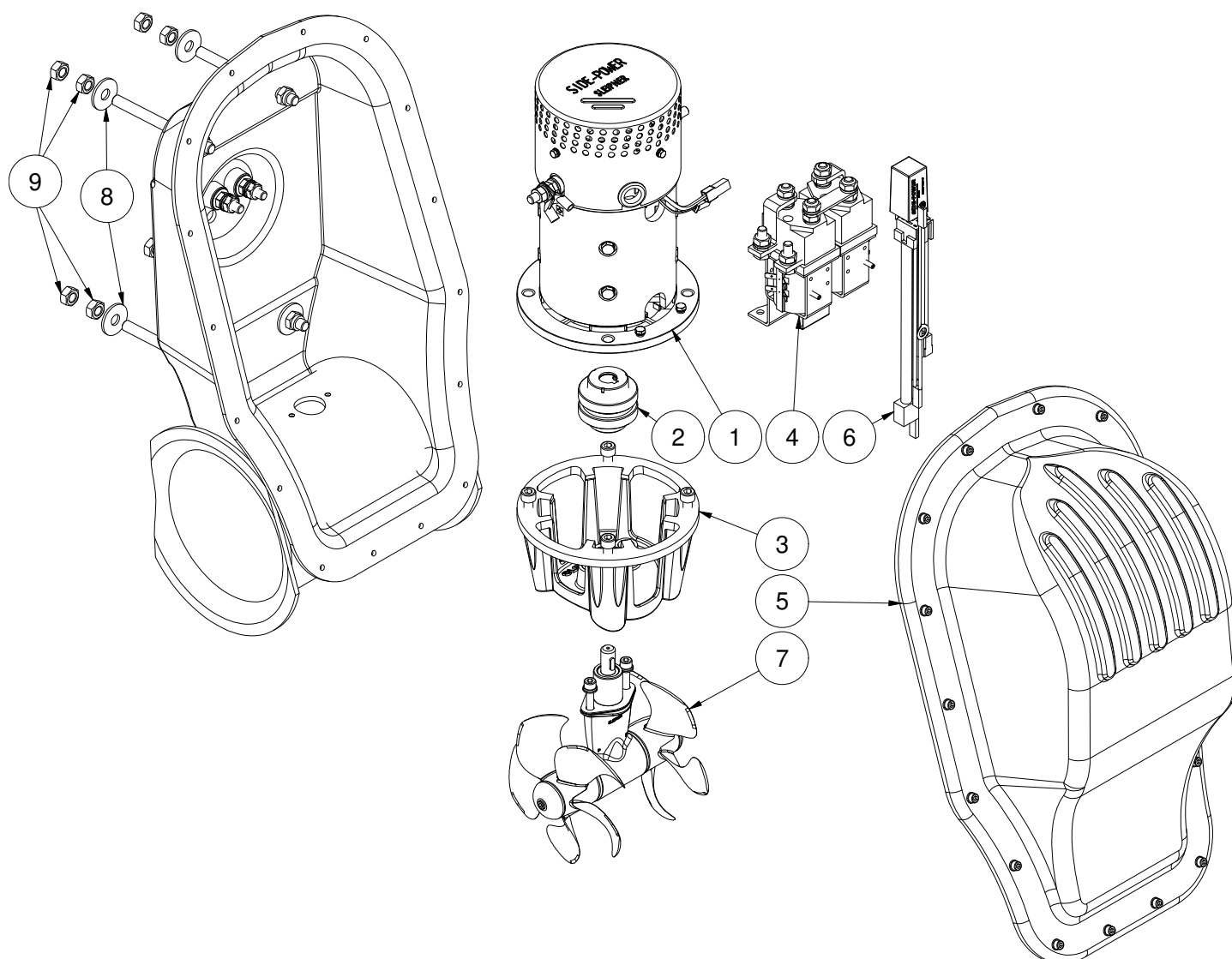
**SX100/185T-12V**

**SX100 external stern thruster 12V**

**Spare parts (valid from 2022-09-01)**



**SLEIPNER**



#	Quantity	Name	Item Code	Description
1	1.00	Electric motor		Electric motor
2	1.00	Flexible coupling	7 1462	Flexible coupling SE80/100
3	1.00	Bracket for motor	8 0501	Motor bracket SE80/100
4	1.00	Solenoid replacement	1013712	Solenoid replacement
5	1.00	Cover chassis upper part kit SX80/100	SM168434	Cover chassis, upper part kit SX80/100
6	1.00	Wireing loom	15 1273 B	Internal wiring harness for SE100-130 12V
7	1.00	Gearleg	8 0601	Gearleg SE80/100
8	4.00	Washer		DIN 9021 - 13
9	8.00	Nut		DIN 934 - M12
*10	1.00	Brushes for motor (kit)		--
*11	1.00	Brushes spring for motor (kit)		--
*12	1.01	Temp switch		--

(\*10) Please provide thruster serial # when ordering brushes for motor (kit).

(\*11) Please provide thruster serial # when ordering brushes spring for motor (kit).

(\*12) Please provide thruster serial # when ordering temp switch.

The installer alone has responsibility for the installation of the spare parts. Side-Power only warranty the spare parts supplied only.

The information given in the document was correct at the time it was published. However, Sleipner Motor AS can not accept liability for any inaccuracies or omissions it may contain. Continuous product improvement may change the product specifications without notice. Therefore, Sleipner Motor AS can not accept liability for any possible differences between product and document.