

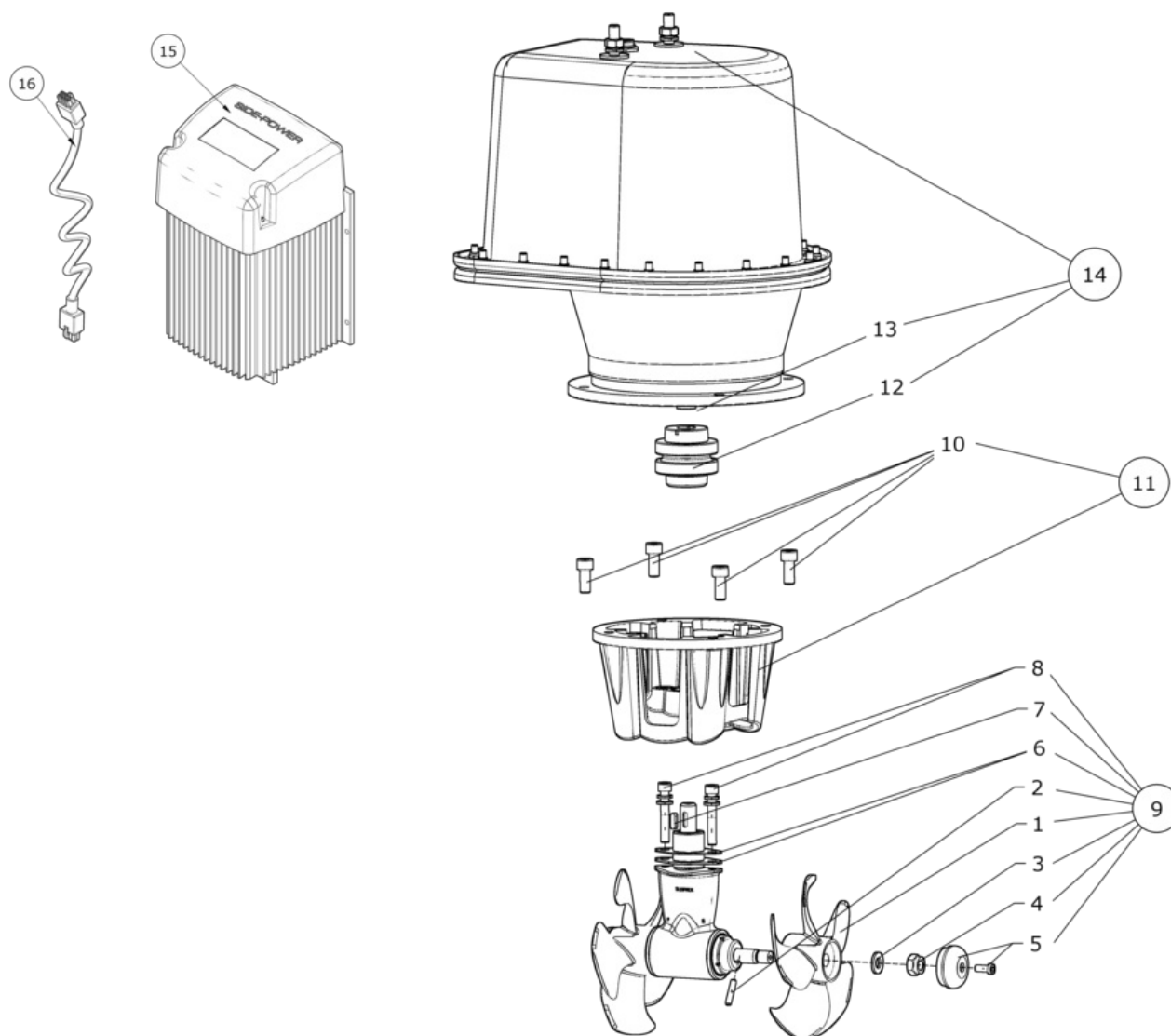
SEP80/185T-12IP

SEP80 PRO™ IP tunnel bow/stern thruster 12V

Spare parts (valid from 2017-05-31)



SLEIPNER



#	Name	Item Code	Description
1	Propeller	7 1261	Propeller SE80/100 5bl Q-Prop™
2	Propeller drivepin	6 1241	Drive pin propeller SE60/80/100 (4/6/7HP)
3	Propeller washer	7 1181	Washer
4	Locknut	4 1260	Lock nut M12
5	Anode	7 1190 A	Anode, aluminium SE60/80/100
6	Gasket	8 0610	Gasket kit for gearleg/tunnel
7	Driveshaft key	6 1440	Key for flexible coupling 5x5x16mm, 7HP SE80/100 + SP75/95
8	Gearleg bolt	7 1080	Bolt M8 x 55 Unbraco
9	Complete gearleg	8 0601	Gearleg SE80/100
10	Bolt, motor to flange	10 1360	Bolt M10x25 Umbraco
11	Complete motor bracket	8 0501	Motor bracket SE80/100
12	Complete flexible coupling	7 1462	Flexible coupling SE80/100
13	Key for electric motor shaft	10 1440	Key for drive shaft 6x6x16mm, SP95/125++
14	Complete electric motor assembly	6 0106 12	Electric motor SEP80 12V IP
15	PPC	PPC820-NH	Power control unit, variable speed controller for PRO™ thrusters, PPC820, without harness
16	PPC control cable	6 1281B-05M	Cable thruster control 5m IP

The installer alone has responsibility for the installation of the spare parts. Side-Power only warranty the spare parts supplied only.

The information given in the document was correct at the time it was published. However, Sleipner Motor AS can not accept liability for any inaccuracies or omissions it may contain. Continuous product improvement may change the product specifications without notice. Therefore, Sleipner Motor AS can not accept liability for any possible differences between product and document.