

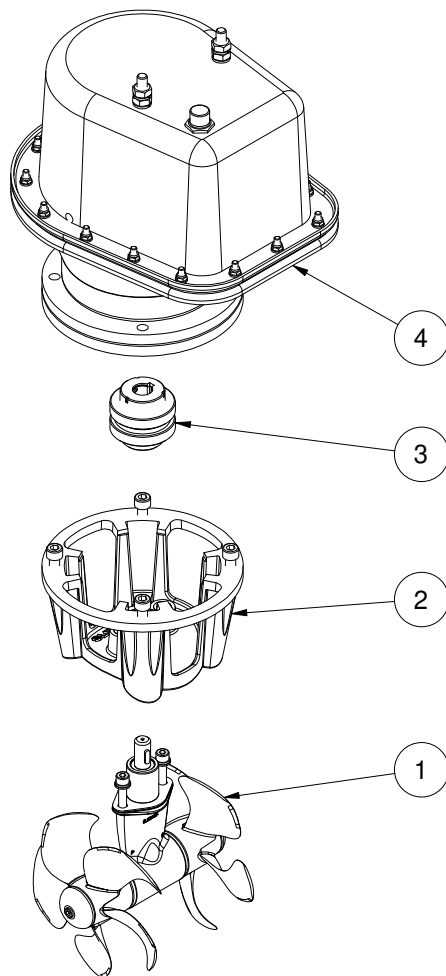
**SE80/185T-24IP**

**SE80 IP tunnel bow/stern thruster 24V**

**Spare parts (valid from 2022-08-17)**



**SLEIPNER**



#	Quantity	Name	Item Code	Description
1	1.00	Gearleg	8 0601	Gearleg SE80/100
2	1.00	Bracket	8 0501	Motor bracket SE80/100
3	1.00	Flexible coupling	7 1462	Flexible coupling SE80/100
4	1.00	Electric motor	6 0108 24	Electric motor SE80 24V IP

The installer alone has responsibility for the installation of the spare parts. Side-Power only warranty the spare parts supplied only.

The information given in the document was correct at the time it was published. However, Sleipner Motor AS can not accept liability for any inaccuracies or omissions it may contain. Continuous product improvement may change the product specifications without notice. Therefore, Sleipner Motor AS can not accept liability for any possible differences between product and document.