

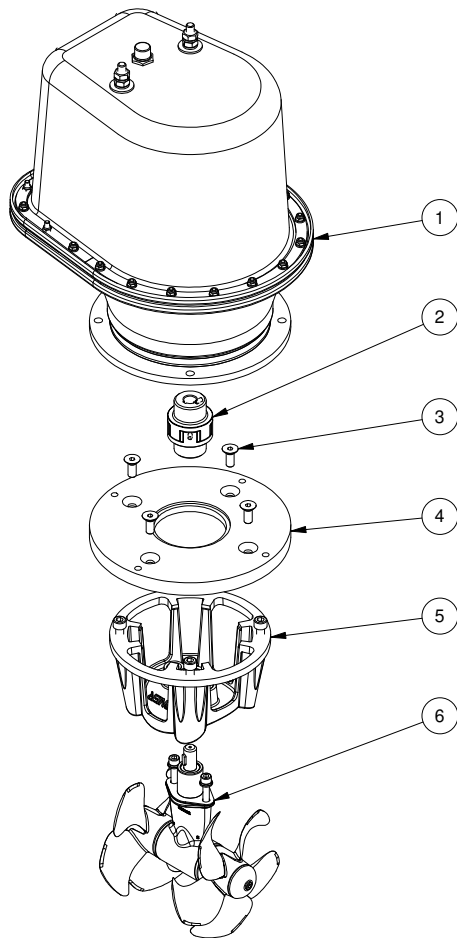
**SE100/185T-12IP**

**SE100 IP tunnel bow/stern thruster 12V**

**Spare parts (valid from 2024-01-22)**



**SLEIPNER**



#	Quantity	Name	Item Code	Description
1	1.00	Electric motor,complete	8 0114 12	Electric motor SE100 12V IP
2*	0.00	Flexible coupling	SM175895	Flexible coupling Ø20xØ16 L77
3*	0.00	DIN 7991 - M10x25 A4		Bolt Unbraco
4*	0.00	Adapter flange	921301	Adapter flange SE100-IP,250x19
5	1.00	Bracket for motor	8 0501	Motor bracket SE80/100
6	1.00	Gearleg complete	8 0601	Gearleg SE80/100

**(2\*/3\*/4\*)** Can be ordered as a kit 8 2002.

The installer alone has responsibility for the installation of the spare parts. Side-Power only warranty the spare parts supplied only.

The information given in the document was correct at the time it was published. However, Sleipner Motor AS can not accept liability for any inaccuracies or omissions it may contain. Continuous product improvement may change the product specifications without notice. Therefore, Sleipner Motor AS can not accept liability for any possible differences between product and document.